



Melton Construction
5075 Chaparral Court #3
Boulder, CO 80301



"Melton Construction was completely professional. The workers adhered to the time line that was promised. The employees were enjoyable and I very much appreciated that they kept the work site clean."

—North Boulder Physical Therapy

"Everyone that worked on our project was friendly and kind, as well as highly skilled and efficient. They all went out of their way to be friendly with our three year-old, too."

—Greg and Emily Brinkman



MELTON

CONSTRUCTION

GOOD IDEAS & NEWS

WWW.MELTONCONSTRUCTION.COM

303.473.9542

WINTER 2011

WE WORK FOR THE NICEST PEOPLE

A Young Gunbarrel Family Creates a Cozy Space for Play

WHEN CAROL AND RONALD BERK NEEDED a new furnace last winter, they began their search for a remodeling company on the Internet. When they found the Melton Construction Web site, they found our process for designing and implementing construction appealing. The couple called Melton to solve the tricky problem of fitting a new, larger unit into the small closet that housed their existing furnace without moving a wall.

"I looked at the Web site and saw a real plan – I liked the progression," Carol says. "It was also important to us that Melton is a part of our lo-

cal community. I was sure that a company this involved in the community would care about quality and integrity."

With forethought and creativity, Steven Phoenix, Melton's small projects division manager, helped the couple solve their furnace fiasco.

"With some precision demolition we managed to run a return air duct through the wall with no disruption to the closet's exterior walls," Phoenix says. This solution made it possible to install a larger, more efficient furnace in the small space.

Because the workmanship impressed the Berks, they called on Melton a second time when they wanted to remodel their dark, dreary basement.

"We wanted a kid space down here," Carol says. "I was picturing a space for pre-teens and teens to hang out with self-serve snacks and no need to clean up every day." The couple had strong ideas about what they wanted – an open, airy space with lots of light, a bathroom and plenty of storage for books. Unfortunately, what they had was a basement segmented into small, disjointed sections with the space's single window buried behind a closed door and storage boxes.

With her design file in hand, Carol joined Melton in the process of designing a space



A NOTE FROM TY

I'M PLEASED THAT MELTON CONSTRUCTION was recently recognized as one of America's Top Remodelers for 2011 by *Professional Remodeler* magazine. The contest used a lot of statistics and financial information to rank our business among others in America's 20 largest market regions.



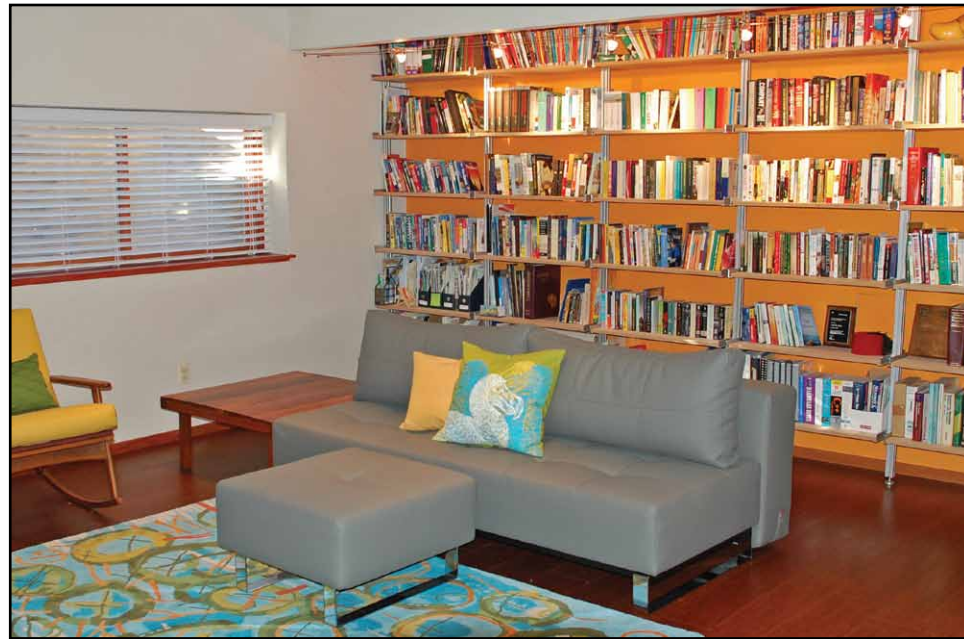
There's a lot of industry prestige associated with this ranking, but it's important to note I'm less concerned with the company's national ranking than I am with what people in my backyard think of Melton. We work very hard to ensure customer satisfaction and to be a positive asset to our community. My personal mission melds with the Melton Construction mission to support local businesses and charities. This year Melton has supported Boulder B-Cycles, Boulder History Museum, Boulder Rotary and other local organizations.

Our plans for the coming year are far greater as we set our sights on building a playhouse for a donation, helping to build a children's playground and more! Boulder County residents are important to us, and our hope is to affect each and every one in a positive manner. Welcome to a great 2012!

— Ty Melton

Continued on page 2

Continued from page 1



that fit her style, needs and budget. "Cork flooring throughout the main area offers rich character and long-term resilience," Phoenix says. "In the bathroom we were able to draw

directly from Carol's design file and install long tile in a herringbone pattern. It creates contrast with the tile pattern in the shower."

Beautiful granite on top of sleek, modern cabinets with open shelving above makes a functional and attractive area for storing and serving snacks.

With bright, lively color and durable surfaces, this kid-friendly space is welcoming for the entire family. As the couple's son reaches adolescence, the basement will be a perfect place for the neighborhood kids to hang out after school and have fun – and maybe even do a little homework. ■



GREAT IDEAS, NEWS, TIPS AND MORE...

Visit our website and sign up for our free, eco-friendly monthly e-newsletter today! Each month we'll send you a few interesting, useful and fun-to-read articles focusing on topics like home design ideas, remodeling trends, cool new products, green and energy-saving ideas, how to maintain your home's beauty and value, and more.

Don't miss the next issue – go to our website and sign up today!

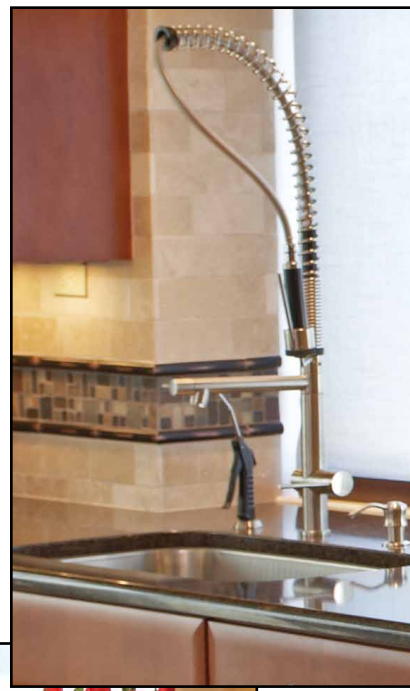


FIXTURE FETISH

OFTEN CALLED THE JEWELRY OF A ROOM, fixtures add the finishing touches to a kitchen or bath that can entirely change the look of the space. Fixtures are a beautiful way of incorporating your personal style into the room and are often clients' favorite product choices to make throughout a remodeling project. However, before you get washed up in a tidal wave of faucets, there are a few things to consider about your project and the functionality of your fixtures.

Kitchen Faucets

Functionality reigns supreme in kitchen faucets. Single-handle styles allow easy, one-handed water flow and temperature



adjustment. This can be especially handy when you're elbow-deep in food preparation! Melton Construction kitchen and bath designer, Cindy Broccardo, says a single-hole faucet is also a great choice for easy maintenance and clean-up.

High arch faucets are a continuing trend in the kitchen. "I'm seeing many clients choosing to splurge on commercial-style faucets," Broccardo says.



to consider before you opt for touchless is the faucet's mechanism for temperature and pressure control. Touchless seems quite practical in a household with tiny hands that may be water wasters, but if the temperature is set too hot it could be a problem.

Bath Faucets

Functionality is of less concern in the bath, so clients are focusing on personal design style when choosing fixtures for this space. "It used to be that bath faucets were all very low, short spouts," Broccardo says. "But the trend in baths today is a higher arch." She also indicates that single-handle faucets in sleek styles are leading the way.

For the shower, more and more clients are choosing multi-jet and rain head fixtures as master baths become more like mini-spas designed for comfort and relaxation.

cardo says. The high arch and spray function are perfect for families that enjoy entertaining, but don't love spending a lot of time cleaning up.

Touchless faucets, once just for commercial applications, are making their way into family kitchens today. One thing



Fashionable Finish

Fixture finishes vary from bright and shiny to matte colors. Classic polished chrome is popular for vintage-style fixtures, but Broccardo notes that brushed nickel is becoming more and more popular. Its warmth contrasts against stark white subway tile or cool granite countertops. The matte finish also hides fingerprints and water spots.

Other finishes include oil-rubbed bronze, hammered metals and even matte black. So, whether your personal style is traditional or modern, don't be afraid to let your creativity run wild when picking out these shiny – or not so shiny – jewels. ■



MELTON RECEIVES AWARD FOR REMODELING EXCELLENCE

MELTON CONSTRUCTION WAS honored with a first place award for a whole house remodel by the *Colorado Awards for Remodeling Excellence (CARE)*. Melton shares the award with Byrnes & Company Design-Renovation-Decoration and interior designer Carrie Connor. Ty and Melton architect, Tom Cattany, accepted the award at an award ceremony in Denver on October 28. The project, completed in the Spring Valley area in northwest Boulder, involved major structural renovation to create a lofty living area with floor to ceiling windows that highlight the view overlooking Boulder.



HIGHLIGHTS FROM THE PROJECT:

- Create cathedral ceiling with gable roof at living room to capture views and bring in additional natural light
- Removal of existing partition walls to create open floor plan and flow
- Conversion of existing two bedrooms and bathroom into master suite retreat
- New infinite linear multi-sided fireplace between living room and master bedroom
- Gable roof at living room accentuates spectacular views while improving exterior character of home
- New stair and balcony railings compliment modern character
- New natural stone veneer at exterior fits in with natural hillside setting

(See additional photos of this project on the back cover.)